

Outdoor Speakers

Specification sheet

SONOS



Outdoor Key Features

- Indoor or outdoor use
- High-power and wide frequency response
- Custom DSP and limiter with Sonos Amp
- Simple to install and connect
- Available in black or white
- Sealed enclosure and weatherproof to IP66

Product Overview

Sonos Architectural speakers make it easy to bring premium sound to virtually any space. Designed and tuned in collaboration with Sonance, these speakers offer natural, room-filling sound with discreet installation. Maximize your system's potential by powering these speakers with Sonos Amp. Our WiFi-enabled amplifier provides unique benefits like optimized tunings and overdrive protection, tailoring the speaker's sound to the unique acoustics of your space. A single Amp can efficiently and effectively power up to three pairs of Sonos passive speakers. When paired with Amp, Sonos Architectural speakers combine the aesthetics of installed solutions with superior fidelity and convenient wireless control.

Sonos surface mount speakers are perfect both indoors and outside. Engineered for humidity, water, salt spray, heat, UV rays, and freezing temperatures, they'll give years of use, whatever the weather.

Whether in a single room or an entire household, count on Sonos Architectural speakers to deliver a seamless audio experience that redefines the possibilities of home entertainment.

Specifications

	Outdoor
SKU	OUTDRWW1 and OUTDRWW1BLK
Low Frequency Driver	6.5 in / 165 mm polypropylene cone, rubber surround, 1.27 in / 32 mm diameter voice coil
High Frequency Driver	1 in / 25 mm polyurethane dome, Ferrofluid-cooled, acoustic back chamber
Frequency Range (No DSP) ¹	73 Hz-20 kHz ±3 dB 55 Hz-20 kHz -10 dB
Frequency Range (With DSP) ¹	48 Hz-20 kHz ±3 dB 34 Hz-20 kHz -10 dB
Nominal Impedance	8Ω
Power Handling (Program)	130 Watts maximum
Power Handling (Continuous) ²	60 Watts maximum
Sensitivity (2.83 V/1 m) ³	85 dB SPL
Rated Maximum SPL ⁴	103 dB @ 1 meter
Nominal Coverage Angle ⁵	80° horizontal x 90° vertical
Directivity Q ⁶	6.5
Directivity Index ⁶	7.9 dB
Connector Type	Gold-plated spring terminals
Operating Temperature	-13° F to 149° F / -25° C to 65° C
Humidity Range	40-95% RH
Protection Rating	IP66 and Mil Spec 810 for humidity, salt spray, temperature, UV
Safety and Compliance	RohS, WEEE, CE, Prop65
Product Dimensions without Bracket (W x H x D)	12.14 x 7.51 x 6.98 in / 308.46 x 190.8 x 177.18 mm
Product Dimensions with Bracket (W x H x D)	12.93 x 7.51 x 7.86 in / 328.5 x 190.8 x 199.64 mm
Net Weight (Each)	8.82 lb / 4 kg
Shipping Weight (Pair)	23.8 lb / 10.8 kg
Included Accessories	Speaker grilles (pair), FastMount brackets (pair), wiring terminal covers (pair)

Accessories

	Black	White
Replacement Speaker Grille (Pair)	OUTGRWW1BLK	OUTGRWW1
In-wall Back Box for Sonos Amp	AMPBBWW1BLK	

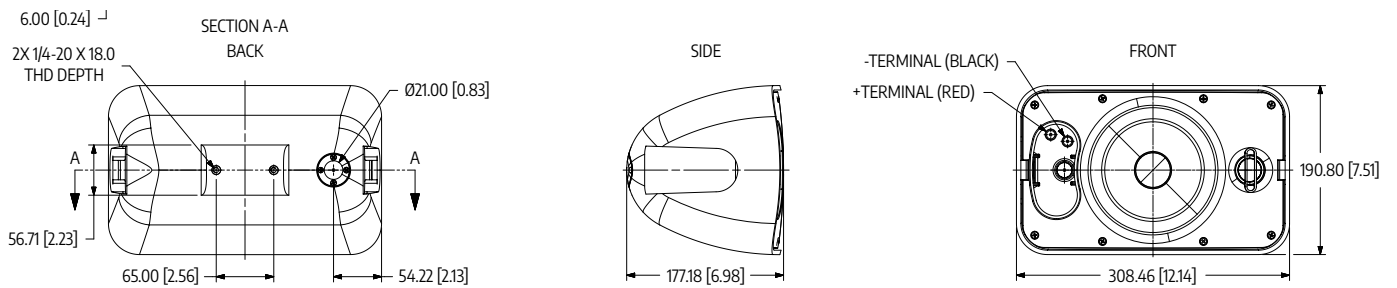
¹ Measured at 2Pi anechoic infinite baffle, ² Noise filtered to meet IEC60268-5, 6 dB crest factor (RMS), ³ Measured on axis, in a 2Pi environment infinite baffle, half-space average 100 Hz to 10 kHz, ⁴ Max SPL exclusive of power compression and calculated from sensitivity and power handling, ⁵ When mounted in landscape orientation
⁶ Half-space (in ceiling) average 1 kHz to 16 kHz

Architect and Engineer Specifications

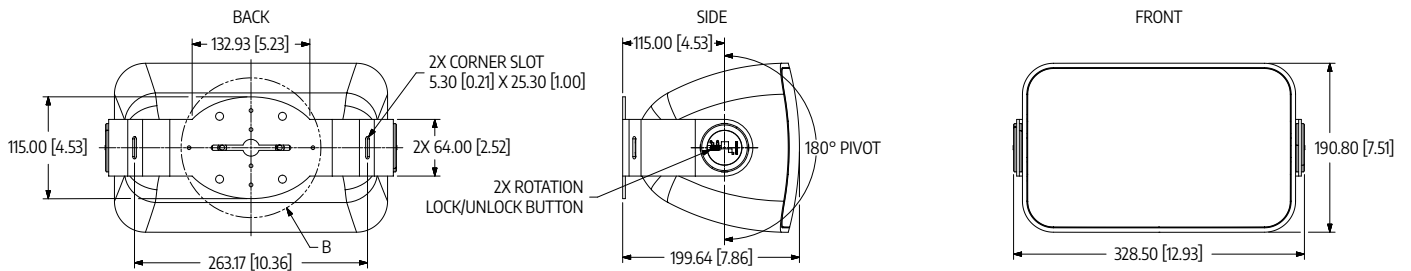
The loudspeaker shall be of surface mount design with accompanying bracket, consisting of a 6.5 in / 165 mm low frequency, polypropylene cone driver with rubber surround and a 1 in / 25 mm polyurethane dome high frequency driver that is Ferrofluid-cooled with an acoustic back chamber.

The loudspeaker shall be capable of meeting the following performance criteria: The measured midband sensitivity shall be 85 dB SPL (at 2.83 V, 1 m); The rated maximum SPL shall be 103 dB SPL (at 1m); The frequency range with Sonos DSP shall be 48 Hz-20 kHz. The frequency range without Sonos DSP shall be 73 Hz-20 kHz (± 3 dB rated sensitivity, in half-space); The nominal coverage angle shall be 80° horizontal x 90° vertical. The loudspeaker shall have an overload protection circuit to protect network and transducers. Nominal impedance shall be 8 ohms.

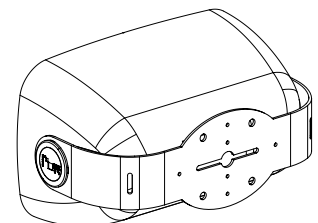
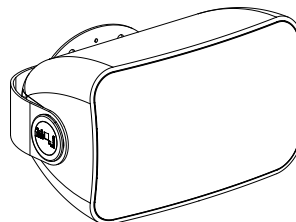
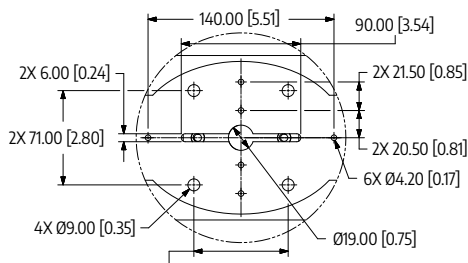
Terminal connections shall be made with gold-plated spring-loaded binding posts. The grilles shall be paintable and magnetic steel. The overall product dimensions with bracket shall be 12.93 in x 7.51 in x 7.86 in / 308.36 mm x 190.8 mm x 199.64 mm. The cutout dimensions shall be 6.93 in x 10.75 in / 176 mm x 273 mm, and the grille dimensions shall be 7.85 in x 11.74 in / 199.5 mm x 298.3 mm. The loudspeaker shall be weather resistant to IP66 and Mil Spec 810 for humidity, salt spray, temperature and UV. With an operating temperature of -13° F to 149° F / -25° C to 65° C. The loudspeaker shall weigh 8.82 lb / 4 kg. When connected to a power amplifier, the user must have the ability to enable Speaker Detection. The loudspeaker shall be the Sonos Outdoor Speaker.



Without Bracket & Front Covers



With Bracket & Front Covers



NOTES:
1. DUAL DIMENSIONS: INCHES ARE IN BRACKETS

DETAIL B
SCALE 1:2

SONOS